

Present Status of Bamboo in Japan

Masatoshi WATANABE, Dr.Agri.

Specialist, Japan Bamboo Society (JBS)

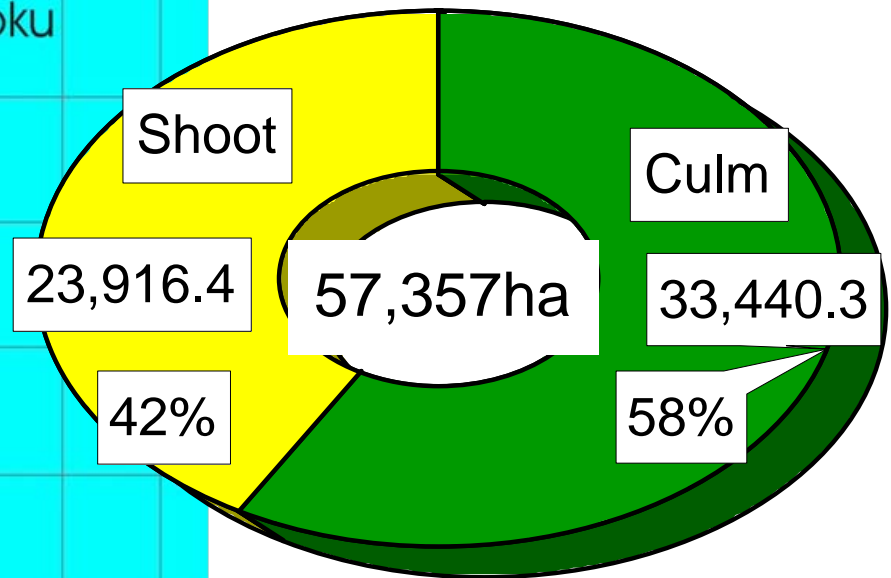
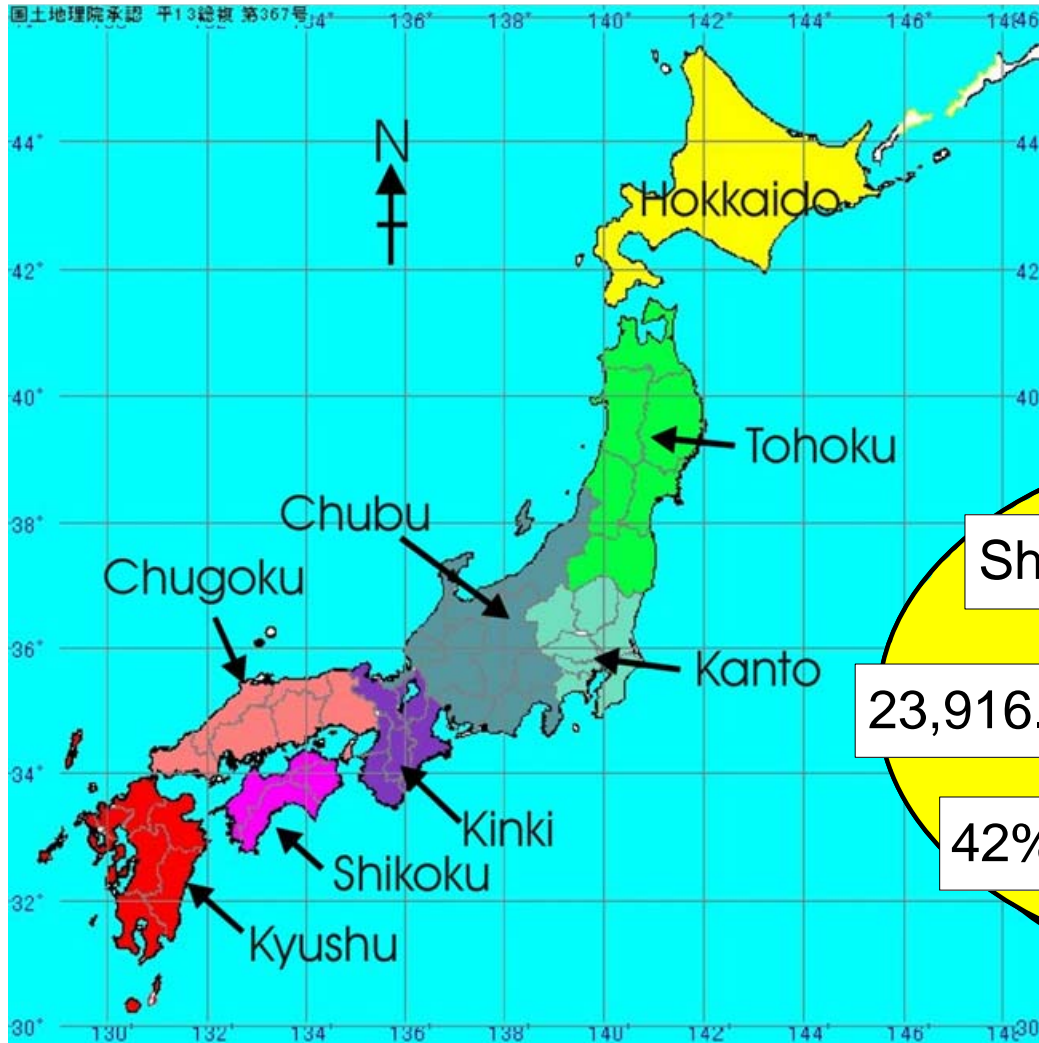
Secretary General, Japan Bamboo Association (JBA)

Technical advisor, Rakusai Bamboo Park of Kyoto City

On Japan

Bamboo cultivation area

in 2009



1. Bamboo in Japan



Phyllostachys pubescens



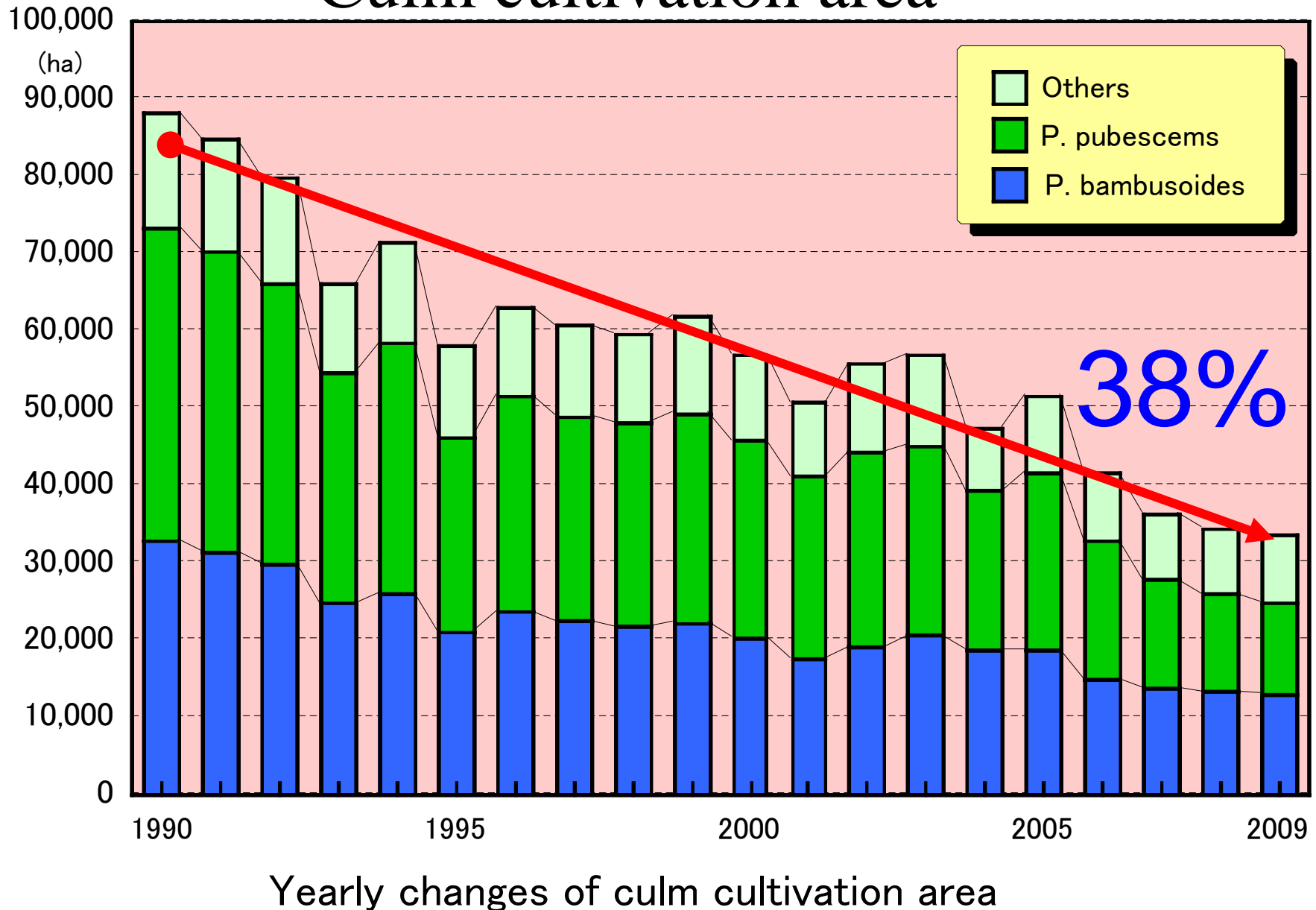
P. bambusoides



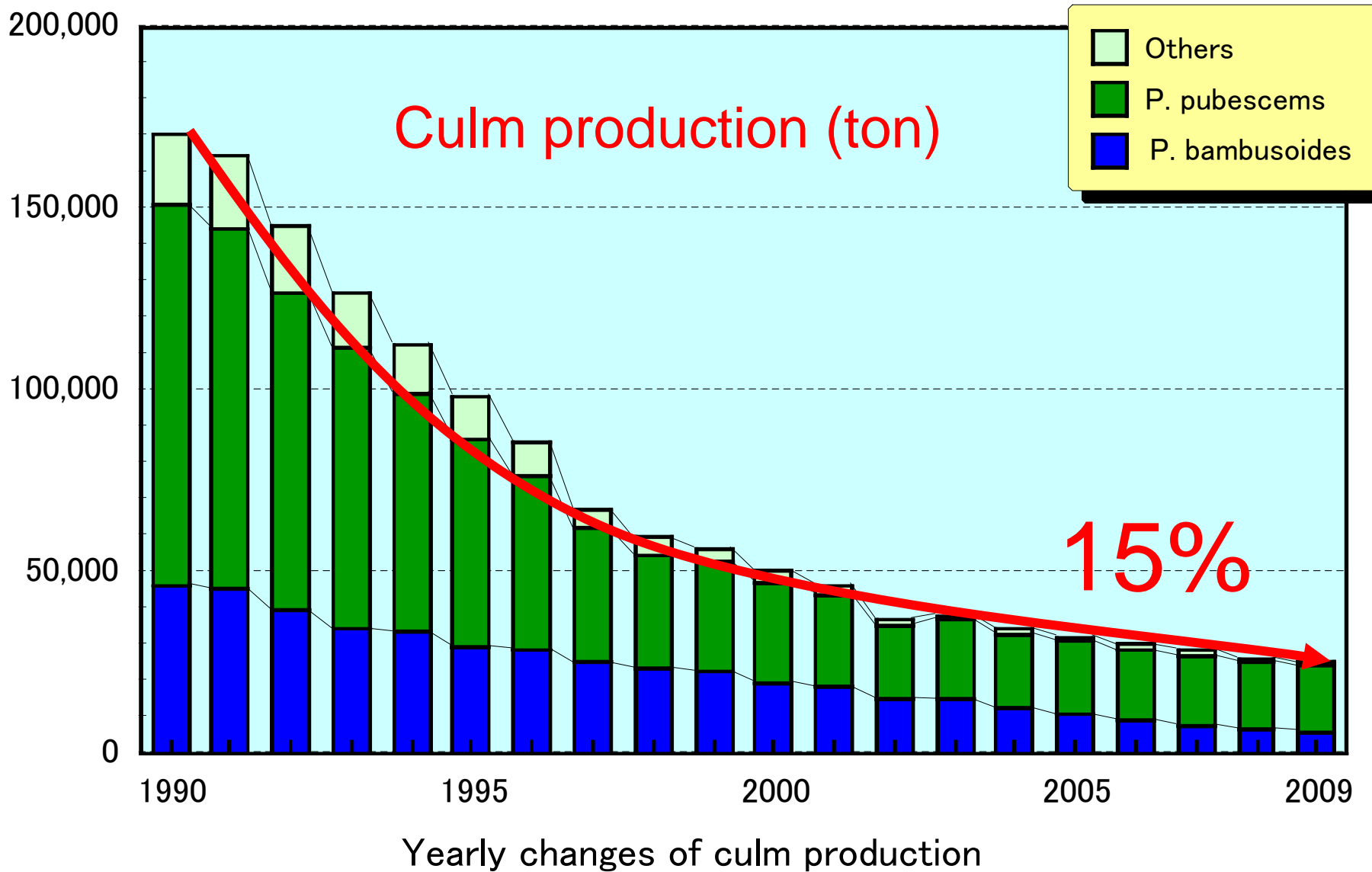
P. Nigra var. *henonis*

2. Present status of culm cultivation and production

Culm cultivation area



Present status of culm production in Japan



The reason why such a downward trend occurred is due to the following

“five reasons”.

①Market decrease

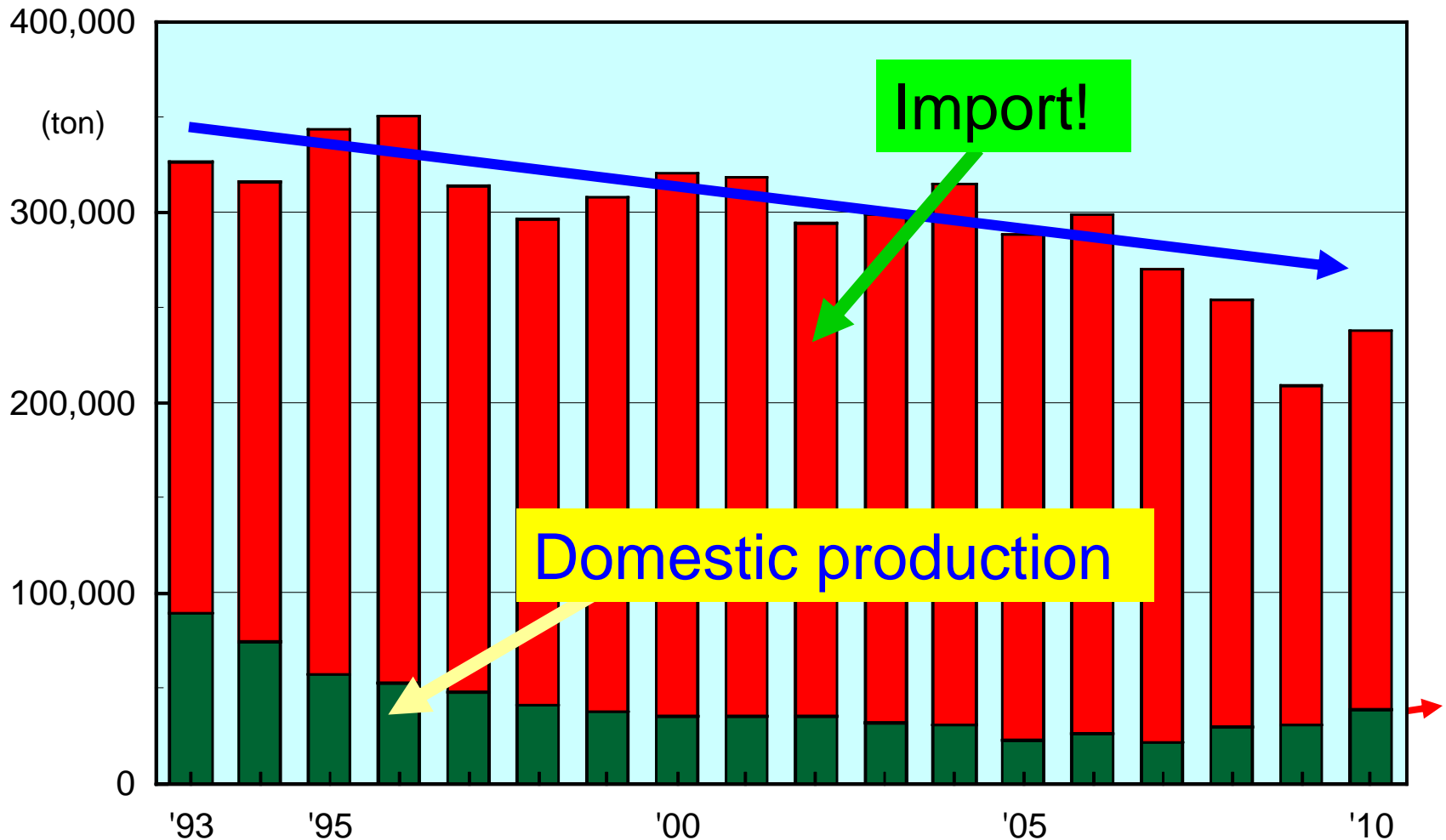
②Availability of substitute articles

③Import of bamboo products

**④Bamboo cultivation is labor
intensive and very hard work**

⑤Aging skilled labor

Present status of bamboo shoot production

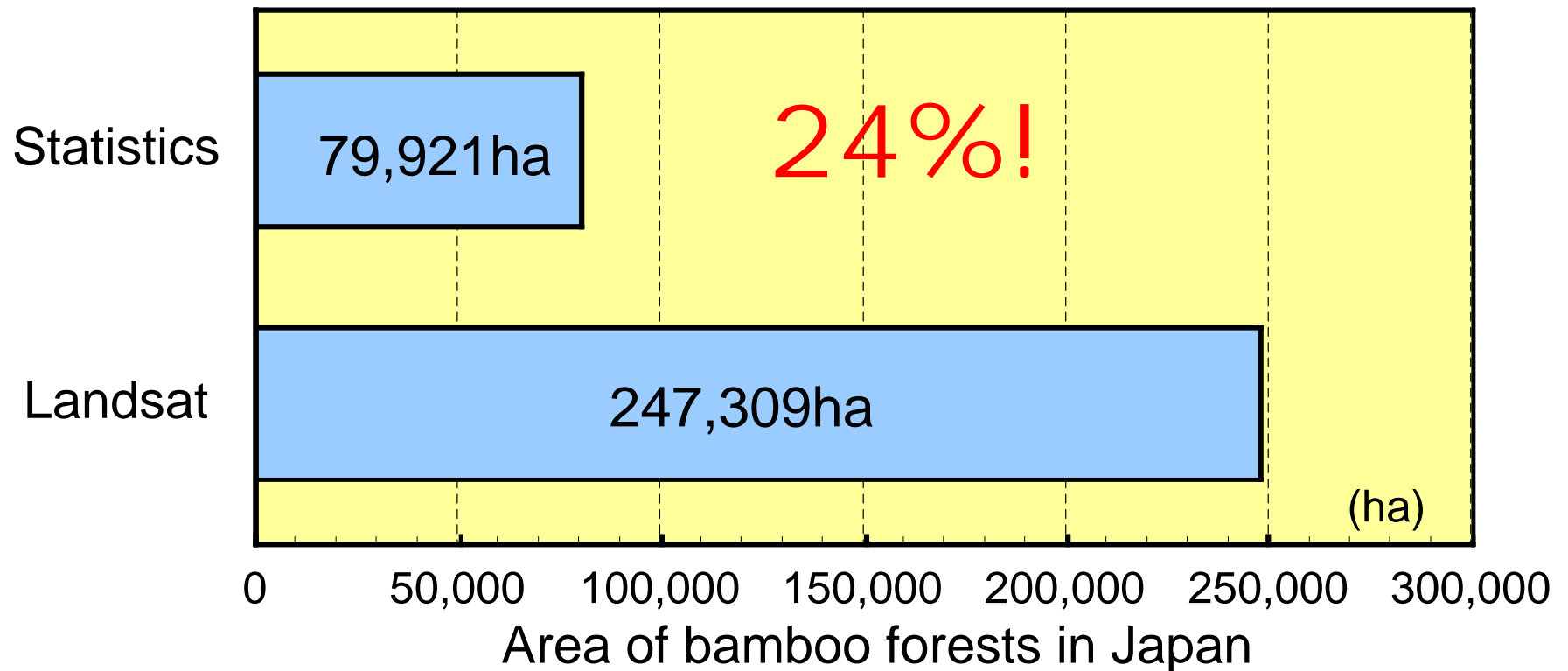


Relationship between domestic production and imported amount

4. Present problems in Japan

Here, I would like to point out the present problems in Japan.

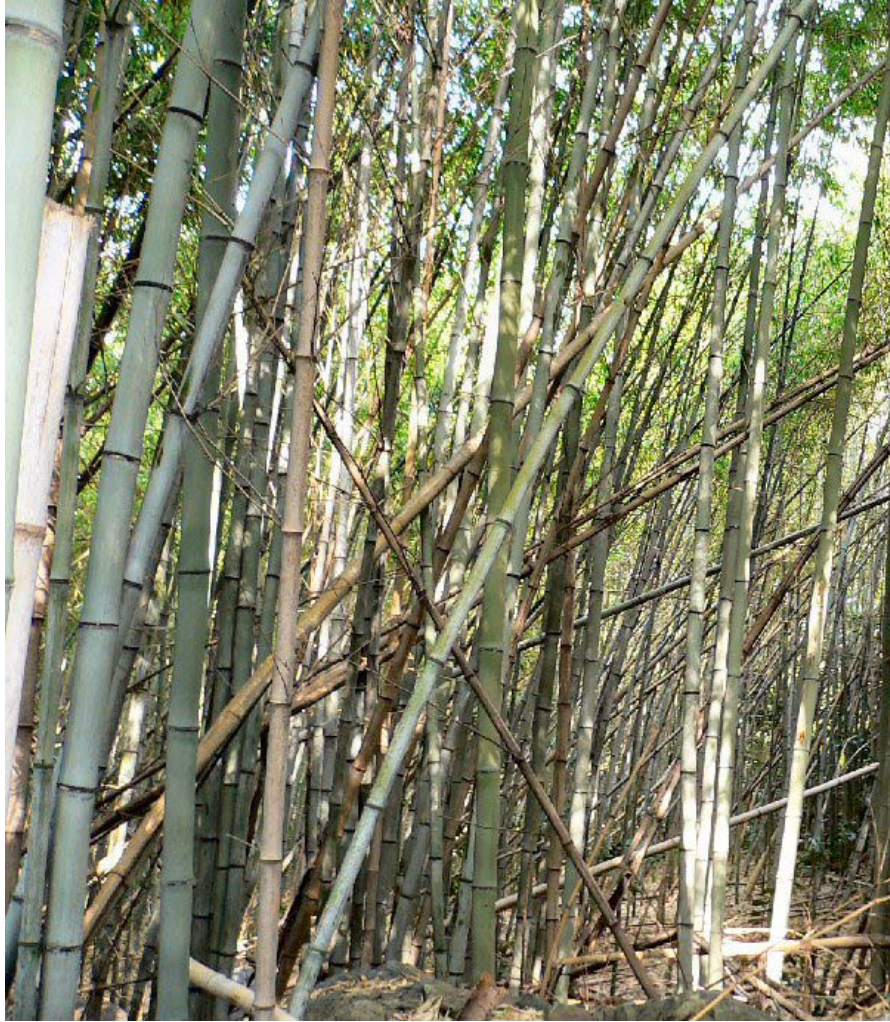
① The increase of non-managed bamboo forests



Bamboo areas

by statistics and Landsat in 2003

Increase of non-managed bamboo forests



Non-managed *P. Bambusoides* forest

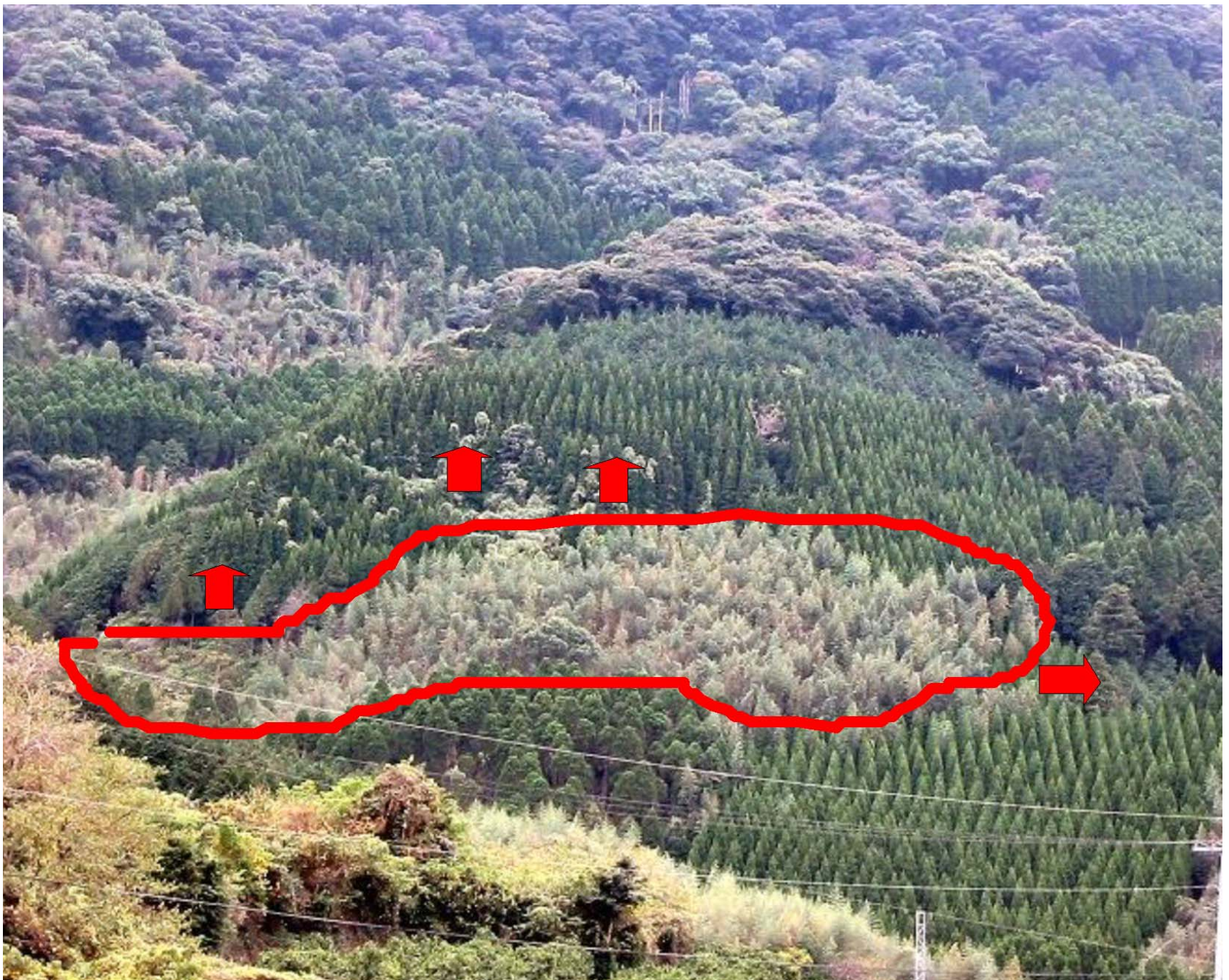


Non-managed *P. pubescens* forest

4. Present problems in Japan

②Expansion of bamboo forests

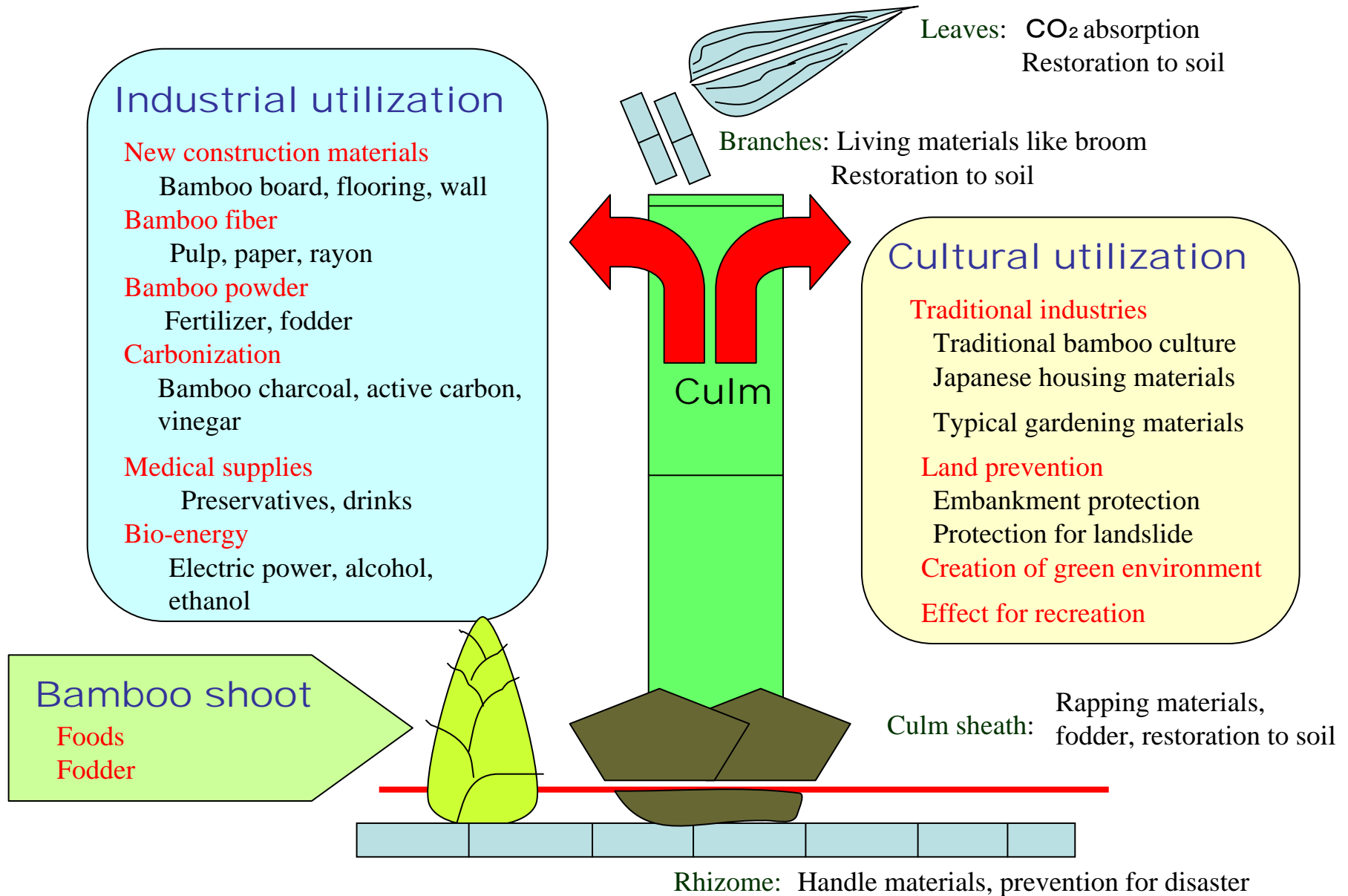
This problem is the expansion of bamboo growth into afforestation areas, woodlands near populated areas and various farms.



5. Utilization of bamboo and related problems in Japan

Here, I would like to show you the figure to explain the ways of bamboo utilization in Japan.

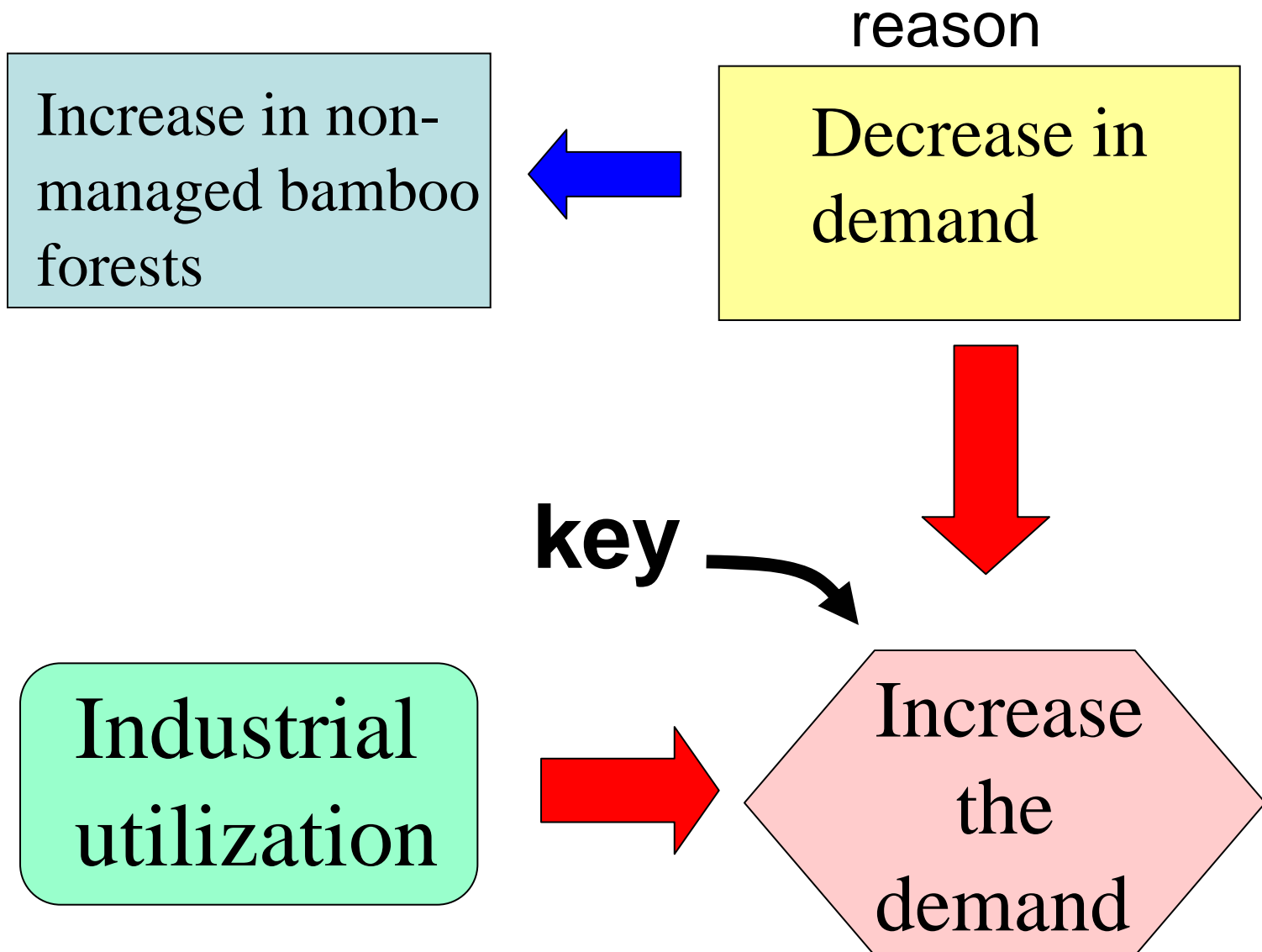
Utilization of bamboo



6. Counter measurement for solving present problems

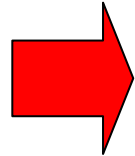
① On the problem of increasing non-managed bamboo forests

Counter measurement



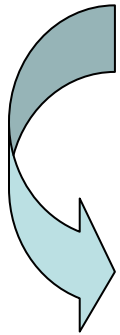
Counter measurement

Industrial
utilization



Problems

- ① "high production costs"
- ② to need the large volume



small scale plan

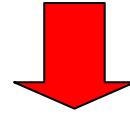


village group

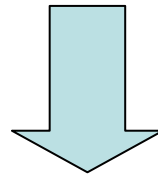
neighborhood associations

small scale communities.

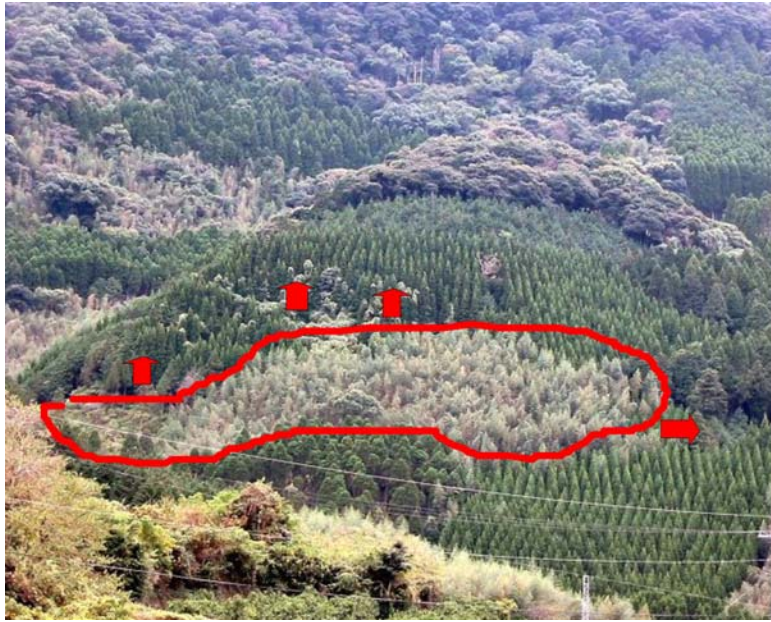
At present, decreasing trend of import



Japanese consumers are awakening to the security and safety concerns of imported foods.

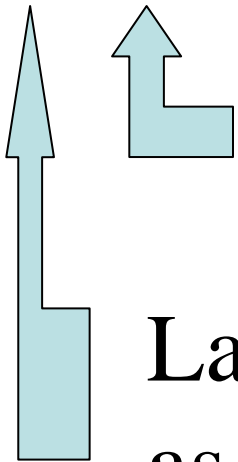


The domestic production of bamboo shoots seems to be increasing gradually.



Counter measurement

On the problem of
expansion of bamboo
forests



No relation with bamboo industry

Lacking necessary management, such
as weeding, improvement cutting and
selective thinning.

Conclusion

I believe that Japan has achieved a level of high technology in the cultivation and utilization of bamboo in a global perspective.

However, such a high technology cannot be manifested today, and presently the valuable bamboo resources of Japan are not utilized sufficiently.

Despite this truth, I would like to emphasize that we Japanese never give up and we must find the best way to solve the various problems inhibiting our bamboo industry in the near future.

Thank you very much!

Masatoshi WATANABE